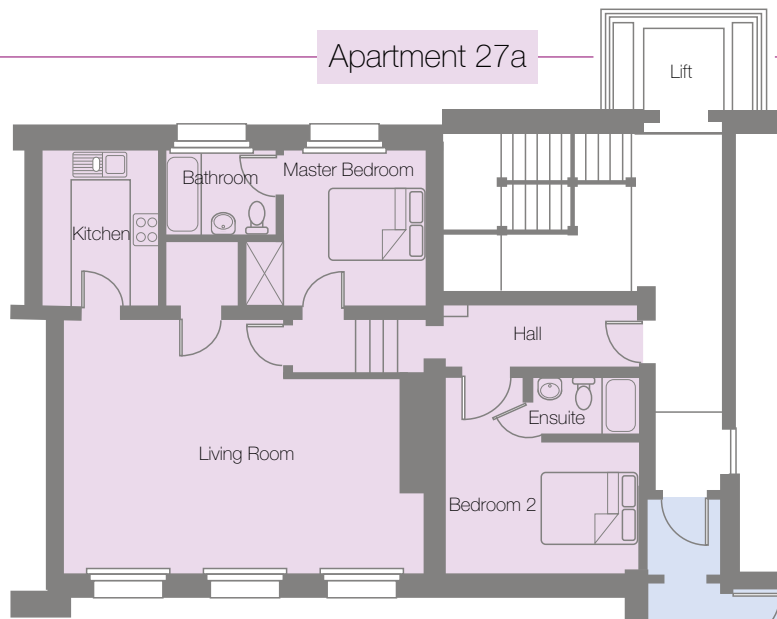


Apartment 27a

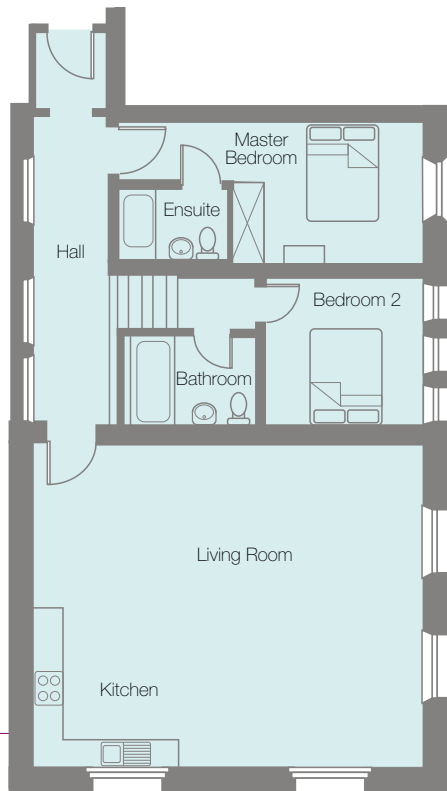


First Floor



Apartment 35a

Mezzanine Floor



Apartment 35

FROME COURT

BARTESTREE :: HEREFORDSHIRE

Apt 27a

Living Room	7215mm(max) x 5260mm(max) 23'6" x 17'3"
Kitchen	2400mm x 3260mm 7'9" x 10'4"
Master Bedroom	2911mm x 3228mm 9'5" x 10'6"
Bedroom 2	4005mm x 2763mm 13'1" x 9'1"

Apt 35

Lounge/Dining/Kitchen	7908mm x 6666mm 25'10" x 21'9"
Master Bedroom	3874mm x 2883mm 12'7" x 9'4"
Bedroom 2	3258mm x 2995mm 10'7" x 9'8"

Apt 35a

Lounge/Dining/Kitchen	8178mm x 6343mm 26'9" x 20'8"
Master Bedroom	4017mm x 2917mm 13'2" x 9'6"
Bedroom 2	3512mm x 3624mm 11'5" x 11'9"



PLEASE NOTE:

Dimensions are approximate and take into account maximum measurements, plans and photographs are a guide only, we reserve the right to amend and alter the specification at any time, all details should be confirmed with sales adviser prior to reservation.