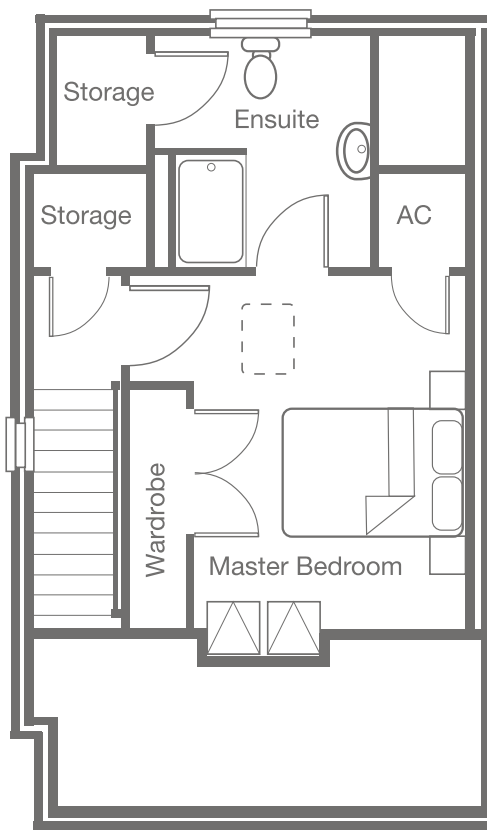


The Cottages

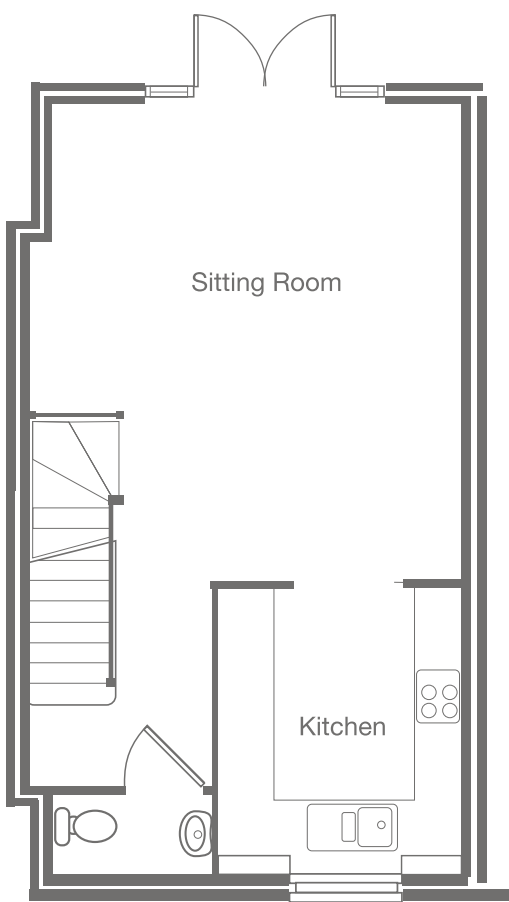
FROME COURT

BARTESTREE :: HEREFORDSHIRE



Second Floor

Master Bedroom 3073 x 3826 | 10'1" x 12'7"



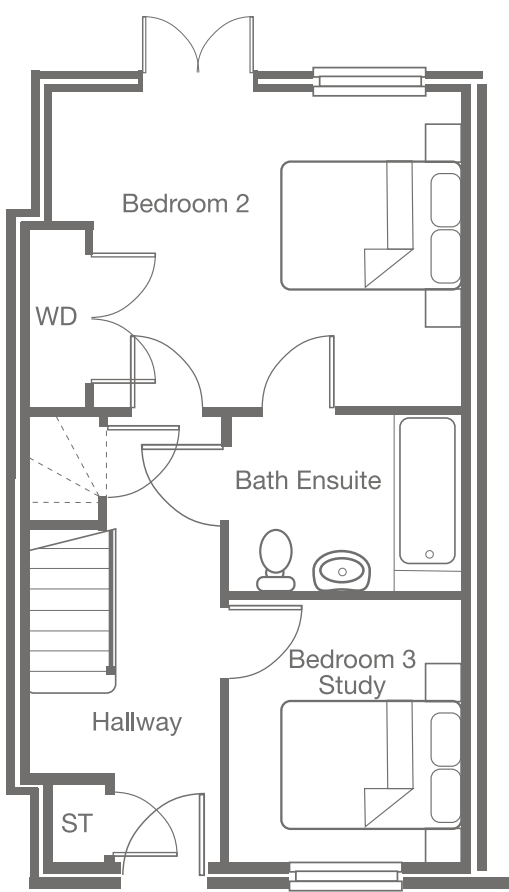
First Floor

Sitting Room 4433 x 5198 | 14'10" x 17'1"
Kitchen 2787 x 3137 | 9'2" x 10'3"

The top floor provides a tranquil master suite with fitted wardrobes, ensuite and storage areas.

The first floor enjoys commanding views to the rear over open countryside, french doors lead onto the west facing patio area. The first floor is ideal for entertaining or simply relaxing.

The open plan sitting room leads into a fully fitted kitchen including AEG appliances.



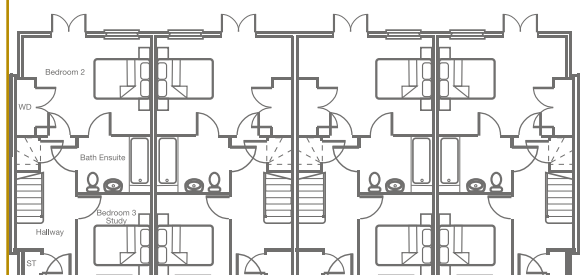
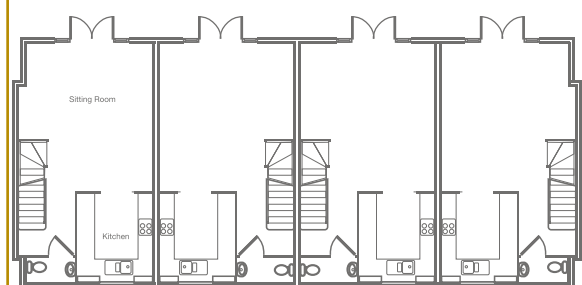
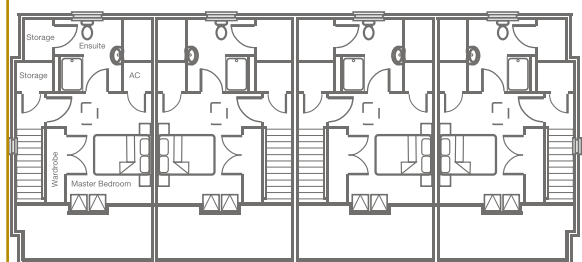
Ground Floor

Bedroom 2 4461 x 3429 | 14'8" x 11'3"
Bedroom 3 2556 x 2884 | 8'5" x 9'6"

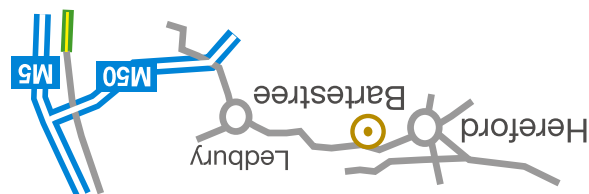
From the front door access is gained to the two ground floor bedrooms, with the bathroom providing modern Duravit sanitaryware and Porcelanosa wall tiling. Doors from bedroom 2 lead out onto a small patio area.

FEATURES

- :: Open plan living/dining room
- :: French doors to rear garden
- :: Fully fitted kitchen with integrated AEG appliances
- :: 1st floor cloakroom
- :: Master bedroom with ensuite
- :: Main bathroom with mixer shower over bath
- :: Double glazed casement windows
- :: Gas central heating
- :: Security alarm



www.bill-jackson.co.uk 01432 34479
www.john-goodwin.co.uk 01531 634648



STRAND HOMES
www.visitstrandhomes.co.uk



Set in private grounds, in the tranquil, scenic Frome Valley Frome Court is well served locally by several hostellers, a village shop and post office and is just 4 miles east of Hereford city centre.

The Cottages

FROME COURT
BARTESTREE :: HEREFORDSHIRE



Set within private grounds, with architectural details to compliment the main Grade II listed building, the four cottages incorporate quality detail and materials and are built to exacting standards.